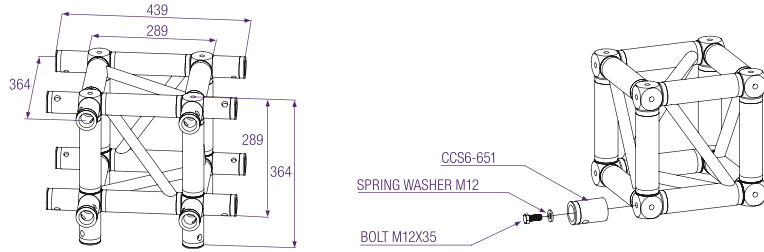
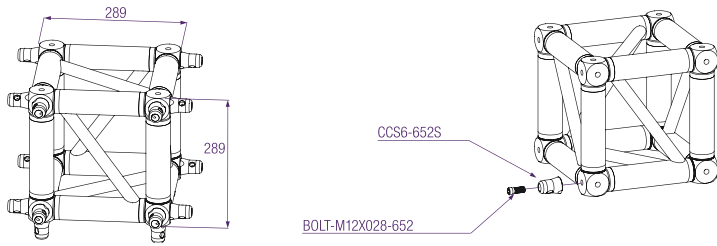
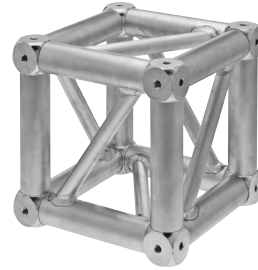


# BOXCORNER 30V

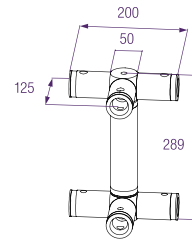


## BOX-30V



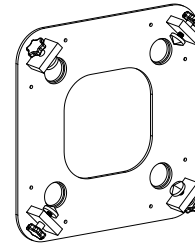
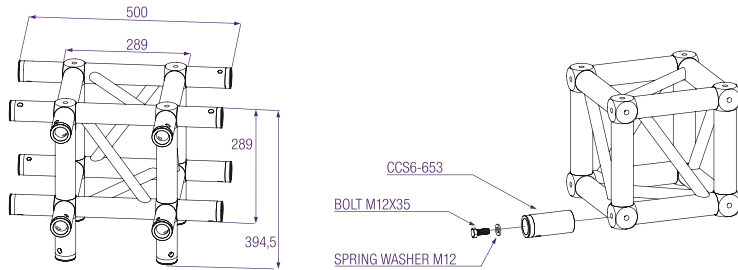
## BOX-30L

Ladder BoxCorner for X•H30 truss. Measurements.

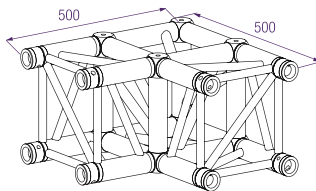


## BOX-30 - KIT

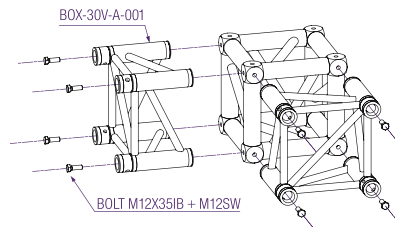
Kit for fixation and assembly. CCS6-651 to box 30V.



BoxCorner for X • H30V truss. Measurements.

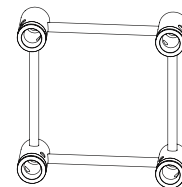


Assembly.



## BOX-30V-ATT

BoxCorner attachment, pre-assembled CCS6-651 couplers.



BoxCorner with attachments with same dimensions as standard corner.

### Technical specifications - 30V BoxCorners

	0-way		2-way		3-way		4-way		5-way		6-way		coupler	bolt	spring washer
	kg	lbs	kg	lbs	kg	lbs	kg	lbs	kg	lbs	kg	lbs			
BOX - 30V - A001	9,9	21.2	12,2	26.9	13,5	29.8	14,8	32.7	16,1	35.5	17,4	38.4	CCS6 - 651	M12x35	M12
													CCS6 - 652	BM12x028 - 652	-
													CCS6 - 653	M12x35	M12

1 inch = 25,4 mm | 1 m = 3.28 ft | 1 lbs = 0,453 kg | 1 daN = 10 N ~ 1 kg